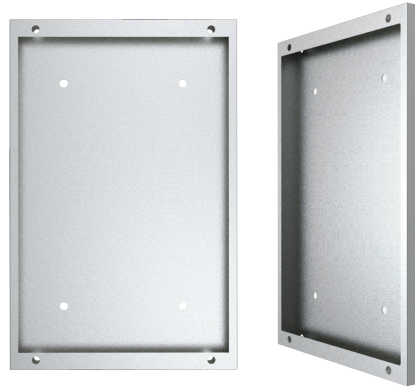


T-7732

Waterproof Emergency Intercom Panel, built in 8 Ω/30W Class D Amplifier

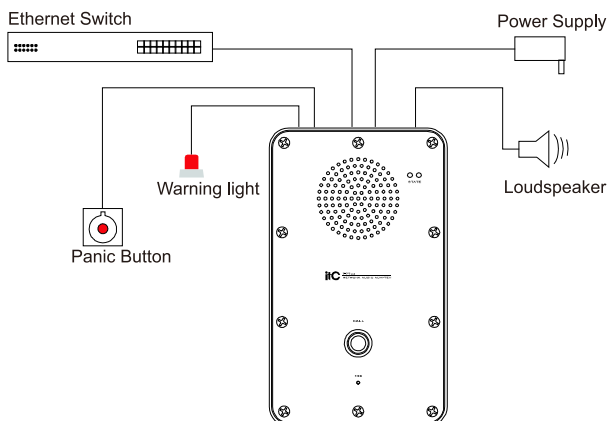


Accessory

Specifications

Model	T-7732
Network Interface	Standard RJ45 input
Support protocol	TCP/IP, UDP, IGMP (multicast)
Audio mode	MP3
Sampling rate	8K~48KHz
Transmission speed	100Mbps
Audio module	16 bits CD sound quality
Output frequency	80Hz~16KHz
THD	≤ 1%
SNR	>65dB
Environment temperature	-20℃~60℃
Environment humidity	20%~80% Relative humidity, no condensation
Power consumption	≤40W
Protection grade	IP55
Output power supply	~220-240V 50-60Hz
Size	290×168×133mm
Weight	4.2Kg

Connections



Description

It is the professional outdoor one-key emergency network intercom terminal, which is designed for those places such as safe city, large park, tunnel, mine, etc. It also can be used for broadcast and playing background music.

Features

- * It is full metal case stoving varnish technique, anti-explosion and waterproof, very durable, which can be fixed in outside vertical pole or wall mount installation.
- * This equipment is adopted embedded computer technique and DSP audio processing technique design, which is used high-speed industrial chip with starting time less than 1 second.
- * It is built-in 1 network hardware audio decoding module, supports TCP/IP, UDP, IGMP(multicast) protocol, which can realize the networking transferring 16 bit CD sound quality of audio signal.
- * It is built-in voice intercom communication module, supports full duplex voice intercom and communication with high-performance DSP audio processing, which supports digital echo cancellation and audio compression function.
- * It is built-in 5W HIFI full-range speaker to have clear and loud sound, it is built-in 30W digital constant impedance amplifier, which can connect with impedance column speaker to suit for outside sound reinforcement needs.
- * It is built-in high sensitivity microphone and supports hands-free calls, self-defined answering. Its sound collecting zone is very large and the tone reducibility is high.
- * It is built-in monitoring function, supports service grade recording management.
- * It is built-in audio signal line output, which can connect to monitoring system.
- * It has 1 short circuit input and 1 short circuit output terminal, short circuit input suits for the linkage signal data collection of those places such as tunnel, while short circuit output suits for safe city monitoring video linkage.
- * It has energy-saving management switch, when there is no broadcasting or seek help, digital amplifier power supply is off and starts the energy-saving mode.
- * 1 channel DC24V power supply output, which is used to circumscribe alarm lamp equipment to offer the power.
- * It supports self-defined calling target, quick one-key call, one-key emergency.
- * It supports all kinds off call strategies, including call forwarding, nobody answering reminding.
- * It supports forwarding time, self-defined ring time.
- * It supports presetting quick playing programs, network remote triggering program playing.
- * It supports self-fined hand-up mode, which can choose initiative or passive mode.
- * It is the high-protection grade: IP55 design, the whole is adopted steel case and anti-tearing down screw, anti-explosion, waterproof, anti-needling.
- * It supports those network structure, such as router, switcher, network bridge gateway, Modem, Internet, 2G, 3G, 4G, multicast, unicast, and any network structure.
- * Digital products with easy expansion, without geographical restrictions, no need to increase management equipment on the machine room, using a common network from the design concept of line construction for easy installation.
- * It supports remote hardware update of the terminal, no need go to upgrade at the local site, to reduce maintenance burdens and make more simple operation.
- * Can be customized 24V DC power supply to meet the needs of outdoor solar batteries.